

Self-audit scheme for animal welfare on Danish pig farms



This set of appendices constitutes Danish Pig Research Centre's guidelines for good production practice for animal welfare on pig farms.

The guide is approved by the Danish Veterinary and Food Administration and meets the requirements for self-audit schemes for animal welfare on Danish pig farms.

The guide covers current legislation and the pig industry's requirements and recommendations. References will be made to relevant legislation at the end of the text when dealing with statutory requirements. Unless otherwise stated, these are the recommendations of the pig industry.

If you use the guide as self-audit scheme on your farm, you should comply with the recommendations and as a minimum fulfil the obligations concerning registration listed under the headline "Requirements for documentation" in each Appendix.

This guide consists of 18 Appendices. In the self-audit schemes, you must write which Appendices you apply in your production.

The Appendices can be supplemented if they do not support conditions and work procedures in your herd.

You can adapt and update the self-audit scheme for animal welfare on your pig farm by downloading material from our website www.vsp.lf.dk. Here you will find, for instance, forms for practical implementation of requirements for documentation and additional descriptions of procedures in Danish, English and Russian.

Contents

APPENDIX 1:	Daily supervision and staff.....	4
APPENDIX 2:	Water and feed	5
APPENDIX 3:	Housing, lying areas and flooring.....	6
APPENDIX 4:	Space requirements and overstocking	7
APPENDIX 5:	Handling, mixing and moving of pigs	8
APPENDIX 6:	Climate, ventilation and sprinkling.....	9
APPENDIX 7:	The farrowing pen	10
APPENDIX 8:	Castration	11
APPENDIX 9:	Tail docking.....	12
APPENDIX 10:	Tooth grinding and administration of iron	13
APPENDIX 11:	Hospital pens	14
APPENDIX 12:	Handling of aggressive, sick or injured animals	15
APPENDIX 13:	Tail biting.....	16
APPENDIX 14:	Shoulder lesions	17
APPENDIX 15:	Destruction	18
APPENDIX 16:	Rooting and enrichment material.....	19
APPENDIX 17:	Transport and suitability for transport	20
APPENDIX 18:	Outdoor keeping of pigs	22

Appendix 1: Daily supervision and staff

Animals must be treated responsibly and be as protected as possible against pain, suffering, fear, permanent injury and significant inconvenience. All persons keeping animals must make sure that they are treated with care, and are housed, fed, watered and cared for while taking into consideration their requirements in terms of physiology, behaviour and health in agreement with acknowledged practical and scientific experiences. *Consolidated act 1343, §2.*

Daily supervision:

- All pigs must be checked upon once a day as a minimum by the person responsible for the livestock unit.

Consolidated act 1343, §3 paragraph 3.

Staff:

- Farm animals must be tended to by a sufficient number of staff with the relevant skills, qualifications and technical know-how required to be able to tend to the animals in a responsible manner in terms of animal welfare. *Statutory order 707, §3.*

- Pig producers employing or hiring staff to work in pig facilities must make certain that these people are given instructions and information on legislation concerning pig production. *Statutory order 323, §35.*

- The owner of animals or his staff can only administer drugs to animals if the person in question has completed a compulsory course in handling of medication or has more than 6 months' experience in livestock farming including the administration of drugs to animals. *Statutory order 481, §7.*

- New staff members must be instructed in essential tasks.

Supervision and frequency

All animals must be checked upon minimum once a day. *Consolidated act 1343, §3, paragraph 3.*

Requirements for documentation

You must make a plan describing who is responsible for: the overall herd, the individual sections, medical treatment and destruction of animals. You can note areas of responsibility on a board placed where all staff members can see it.

All medical treatments (except treatment with iron preparations, vitamins, sera and vaccines) must be recorded. These recordings must include date when treatment is initiated and completed, which and how many animals are being treated, cause, drugs and dosage, and method of administration. These recordings must be kept for minimum 5 years. *Statutory order 780, §15.*

Record dead animals in the herd in connection with the daily supervision. You must make daily recordings of mortality in the herd. *Statutory order 707, §6.*

Corrective actions and advice

If in doubt as to who does what, make a new work plan immediately.



Appendix 2: Water and feed

All pigs must be fed minimum once day. *Statutory order 323, §18.*

Pigs older than two weeks must have permanent access to sufficient amounts of fresh water. *Statutory order 323, §19.*

If pigs are reared in groups and are not fed according to appetite or via an automatic feeding system that feeds the animals individually (such as electronic sow feeding), each pig must have access to feed at the same time as the other members of the group. *Statutory order 323, §18.*

The animals must be fed via a system in which all animals are assured of a sufficient amount of feed also in situations with competition for feed. *Statutory order 32, §18, paragraph 2.*

The feed must match the animals' age, weight, behavioural and physiological needs. *Statutory order 323, §17.*

Equipment for feeding and watering must be designed, produced and installed in such a way that it provides the lowest possible risk of contamination of feed or water and of harmful effects resulting from internal rivalry among the animals. *Statutory order 707, §15.*

Gestating sows and gilts must have access to sufficient amounts of straw, filling feed or high-fibre feed that gives the pigs a feeling of satiety and meets their need for chewing. *Act 404, §9a; Statutory order 323, §21.*

Supervision and frequency

During the daily inspection, check that all animals have feed and water. If you practise electronic sow feeding, check the left-over list daily.

Check nipple drinkers as a minimum every time new animals are transferred to the pen.

Requirements for documentation

None.

Corrective actions and advice

If defects are detected, repair these immediately.



Appendix 3: Housing, lying areas and flooring

Housing:

- All pigs must be able to get up, lie down and rest without obstacles. *Statutory order 323, §12.*
- The design of the pen in which the animal is housed must make it easy for the animal to turn around unless that conflicts with specific veterinary advice. *Statutory order 323, §10, paragraph 3.*
- With the exception of pigs kept in isolation due to disease or injury, pigs must be able to see other pigs. Gestating sows and gilts are exempt from this in the week leading up to expected farrowing. *Statutory order 323, §12, subsection 3 and §25.*
- Pig houses must have a minimum light intensity of 40 lux for a period of minimum 8 hours a day. *Statutory order 323, §8.*
- Incessant noise louder than 85 db and sudden noise must be avoided. *Statutory order 323, §7.*
- Tethering of pigs is illegal. *Statutory order 323, §6.*

Lying areas:

- All pigs must have access to a lying area that is comfortable in terms of physical conditions and temperature; that is sufficiently drained and clean; and where all pigs are able to lie down at the same time. *Statutory order 323, §12, paragraph 2.*
- Gestating sows and gilts kept in individual stalls the first four weeks after service must have a minimum of 90 cm solid floor measured from the back of the trough. This applies to new facilities, and to all facilities from January 1, 2013. *Act 404, §7.*

Flooring:

- Floors must be neither slippery nor uneven as that may cause a risk of the animals injuring themselves, and they must be designed, produced and maintained in such a way that pigs that stand up or lie down do not get injured. *Statutory order 323, §16.*
- If bedding is supplied, this must be clean, dry and harmless to the pigs. *Statutory order 323, §16, paragraph 2.*

Supervision and frequency

During the daily inspection, check that the floors are clean (not slippery) and that all pigs are able to stand up, lie down and rest without problems.

Requirements for documentation

None.

Corrective actions and advice

If you see animals that are unable to get up, lie down and rest without problems, move them to a hospital pen / relief pen.



Appendix 4: Space requirements and overstocking

Existing space requirements for weaners and finishers
(Statutory order 323, §4):

	Unobstructed available space in the pen, m ² per pig
0 - 10 kg	0.15 m ² per animal
10 - 20 kg	0.20 m ² per animal
20 - 30 kg	0.30 m ² per animal
30 - 50 kg	0.40 m ² per animal
50 - 85 kg	0.55 m ² per animal
85 - 110 kg	0.65 m ² per animal
Above 110 kg	1.00 m ² per animal

Existing space requirements for group-housed gilts
(Act 404, §6, subsection 2):

	Unobstructed available space in the pen, m ² per gilt
First 10 gilts	1.90 m ² per gilt
Subsequent 10 gilts	1.70 m ² per gilt
For every new gilt thereafter	1.50 m ² per gilt

Existing space requirements for group-housed gestating sows
(Act 404, §6, subsection 1):

	Unobstructed available space in the pen, m ² per sow
0 – 17 sows (for the first 4 sows)	2.80 m ² per sow
0 – 17 sows (subsequent 6 sows)	2.20 m ² per sow
0 – 17 sows (subsequent 7 sows)	2.00 m ² per sow
18 – 39 sows	2.25 m ² per sow
More than 39 sows	2.025 m ² per sow

In group-housing systems, pens must not be narrower than 3 m in any place – this also applies to passages. Act 404, §6, subsection 3.

Current space requirements for farrowing pens:

- There must be an unobstructed area behind the sow/gilt to ease natural farrowing or facilitate obstetric aid during farrowing. Statutory order 323, §27.
- Piglets must have sufficient room to nurse without problems. Statutory order 323, §31.
- All piglets must be able to lie down on a solid bed at the same time. Statutory order 323, §30.

Current space requirements for boars (Statutory order 323, §22):

- Boar pen without mating: 6.00 m²
- Boar pen with mating: 10.00 m²

Consider what steps you can take to avoid overstocking, for instance in case of failure to ship pigs for slaughter. Co-ordinate steps to reduce overstocking with your herd vet /pig advisor.

Supervision and frequency

Make a plan of how many animals each pen can hold. Upon transfer of animals to a pen, check how many pigs the pen can hold and whether there is room for more animals in the pen.

Requirements for documentation

None.

Corrective actions and advice

If a pen is overstocked, immediately remove animals to meet the space requirements. Calculate how many pigs each pen can hold as that may help solve "bottleneck problems" in your herd.

Appendix 5: Handling, mixing and moving of pigs

Handling:

- Handle pigs as gently as possible in all situations and do not act aggressively towards the animals.
- Do not press or frighten the pigs.

Mixing of pigs:

- Weaners and finisher must be kept in stable groups and be mixed as little as possible. *Statutory order 323, §34.*
- Pigs that do not know each other must be mixed as early as possible, preferably within a weak post-weaning. *Statutory order 323, §34, paragraph 2.*

Moving of pigs:

- Do not move pigs back to younger groups.
- Use the animals' natural behaviour: pigs prefer to walk towards light areas; they prefer to walk uphill rather than downhill etc.
- Use driving boards when moving pigs.
- It is illegal to use instruments that may give electric shock. *Statutory order 323, §13a.*

Hiding-place and escape:

- When mixing pigs, it must be possible for the pigs to escape from or hide from other pigs. *Statutory order 323, §34, paragraph 2.*

Supervision and frequency

When you mix pigs, keep an extra eye on the pen to be able to intervene immediately in case of fights, injury etc. *Statutory order 323, §34, paragraph 2.*

Requirements for documentation

None.

Corrective actions and advice

If you see serious or continued hierarchy fights after mixing pigs, implement one or more of these measures (*Statutory order 323, §14, paragraph 3*):

- Place a bale of straw in the pen that the pigs can hide behind.
- Supply extra rooting material to divert the pigs' attention.
- Remove from the pen pigs that display continued aggressive behaviour.
- Remove from the pen pigs that have been severely attacked or that are unable to manage in the competition with the other animals in the pen.



Appendix 6: Climate, ventilation and sprinkling

Climate and ventilation:

- All automated or mechanical equipment must be checked minimum once a day. *Statutory order 707, §12.*
- Mechanical ventilation must be supplemented with an appropriate spare system that guarantees the ventilation required to maintain animal health and welfare in case of system failures. *Statutory order 707 §13.*
- There must be an alarm system that notifies of system failures. This alarm system must be tested regularly. *Statutory order 707, §13.*
- Circulation of air, concentration of dust, temperature, relative air humidity and concentration of gases must be kept at levels that are not harmful to the animals. *Statutory order 707, §9.*

Sprinkling:

- Pens for weaners above 20 kg, breeding stock and finishers must have a sprinkling system or similar devices for regulating the animals' body temperature. This applies to pig facilities taken into use after July 1, 2000. The requirement will apply to all pig facilities as of July 1, 2015. *Act 104, §4.*
- Facilities for group-housed gestating sows and gilts must have a sprinkling system or similar devices for regulating the animals' body temperature. This applies to facilities taken into use after July 1, 1999. The requirement will apply to all facilities as of January 1, 2014. *Act 104, §8.*

It is recommended to place laminated instructions by the individual climate control units that describe how to operate the ventilation system in practice to ensure optimum ventilation.

Supervision and frequency

During the daily inspection, check that the ventilation system is operates at optimum performance.

Check that the settings of the ventilation system are correct when moving animals.

With each new batch (or another set interval), check that the system works (check at minimum ventilation as well as maximum ventilation).

With each new batch, check that both emergency system and alarm system work.

With each new batch, check and, if necessary, replace nozzles in the sprinkling system.

Requirements for documentation

The self-audit scheme on your pig farm must include a log of inspections of the alarm systems every quarter or after wash of the facility.

Corrective actions and advice

Immediately rectify errors in the ventilation system.

If you suspect that the ventilation system is somehow failing or is not ventilating at optimum rates, call in a climate consultant from a ventilation company or from Pig Research Centre.



Appendix 7: The farrowing pen

Up to farrowing:

- In the week before expected farrowing, sows and gilts must have access to sufficient amounts of nesting material unless this is technically impossible to handle in the slurry system used in the herd. *Statutory order 323 §26, paragraph 2.*
- Transfer gestating sows and gilts to the farrowing pen minimum three days before expected farrowing. *Statutory order 323, §25, paragraph 2.*

Lactation:

- Piglets must have room to nurse without difficulties. *Statutory order 323, §31.*
- Part of the total floor area – enough for all piglets to be able to rest at the same time – must be solid, covered by a mat or littered with straw or other appropriate material. *Statutory order 323, §30.*
- The lying area must be dry and comfortable and separate from the sow. *Statutory order 323, §30.*
- If necessary, install a source of heat in the pen. *Statutory order 323, §30, paragraph 2.*

Weaning:

- Pigs must not be weaned before they are 28 days old unless not weaning them will jeopardise the welfare and health of sow or piglets. *Statutory order 323, §33.*
- Pigs may be weaned 7 days earlier if they are moved to specialised facilities. These facilities must be emptied, cleaned and disinfected thoroughly before introducing a new group. The facilities must furthermore be separate from other sow facilities to minimise the risk of transmitting diseases to the piglets. *Statutory order 323, §33, paragraph 2.*

It is recommended to use production controls or sow boards as documentation for correct weaning age.

Supervision and frequency

During the daily inspection, check:

- That all sows and gilts expected to farrow within the coming week have enough nesting material
- That all pigs are able to nurse without difficulty
- Whether the farrowing crate needs adjustment

Before weaning a batch of pigs, check that the pigs are old enough for weaning.

Requirements for documentation

During the daily inspection, record the number of dead pigs (*Statutory order 707, §6*). You must make daily recordings of piglet mortality by noting date and number of dead pigs at litter level or section level.

Corrective actions and advice

If you find that nesting material is lacking, immediately supply more.

If some piglets are unable to nurse without difficulty, move them to a sow where there is enough room or make a nurse sow.

If you find that weaning age is too low, establish more farrowing pens or reduce the number of sows.



Appendix 8: Castration

Piglets can be castrated without anaesthesia if castration takes place as early as possible within the first 2-7 days of the piglet's life and if pain relief is administered. *Statutory order 324, §7.*

Tearing of tissue is illegal. *Statutory order 324 §7, paragraph 2.*

Only people who have received appropriate training are allowed to perform castration procedures. *Statutory order 324, §7.*

If piglets are castrated later than day 7, a vet must perform the procedure and prolonged analgesia must be administered. *Statutory order 324, §7, paragraph 3.*

Supervision and frequency

Routinely check that the necessary care and hygiene is being exercised during castration.

Requirements for documentation

All medical treatments must be recorded (see Appendix 1), and these records must be kept for minimum five years. *Statutory order 481, §13, paragraph 2.*

Corrective actions and advice

If abscesses are observed as a result of castration, note who performs castrations and improve the level of hygiene.



Appendix 9: Tail docking

Routine tail docking of pigs is illegal. *Statutory order 324, §4.*

Tail docking of piglets is allowed within the first 2-4 days of the piglets' lives if you have documentation that tail injuries in the herd can be attributed to omission of tail docking. *Statutory order 324, §4, paragraph 2.*

Dock as little as possible and do not dock more than half of the tail. *Statutory order 324, §4, paragraph 2.*

Prolonged analgesia must be administered if tail docking is performed after day 4 of the piglet's life. *Statutory order 324, §4, paragraph 5.*

Supervision and frequency

Routinely check that the necessary care and hygiene is being exercised during tail docking.

Requirements for documentation

If tail docking is practised, documentation must be available proving that the herd owner knows from experience that tail-biting problems develop in the herd and that other steps have been implemented to prevent tail-biting. *Statutory order 324, §4, paragraphs 2 and 4.*

Corrective actions and advice

Before performing tail docking, you must have taken steps to prevent tail-biting through various measures taking into consideration the environment and stocking density. Inadequate conditions in the pig facilities or management systems must be corrected. *Statutory order 324, §4, paragraph 4.*



Appendix 10: Tooth grinding and administration of iron

Tooth grinding:

- Routine grinding of piglet canine teeth is illegal. *Statutory order 323, §32.*
- Grinding of piglets' canine teeth is allowed within the first 4 days of life if you have documentation that injuries to sows' teats or other pigs' heads, including ears, can be attributed to lack of tooth grinding. *Statutory order 323, §32, paragraph 2.*
- Canine teeth must be uniformly ground. *Statutory order 323, §32, paragraph 2.*
- Cutting of canine teeth is illegal. *Statutory order 323, §32, paragraph 5.*

Administration of iron:

- Iron supplements via injection should be given on day 3-5 of life. Iron supplement can also be administered orally.

Supervision and frequency

Routinely check that the necessary care and hygiene is being exercised during tooth grinding.

Requirements for documentation

If tooth grinding is practised, documentation must be available proving that injuries to sows' teats or other pigs' heads, including ears, can be attributed to lack of tooth grinding. *Statutory order 323, §32, paragraph 2.*

Corrective actions and advice

Before grinding canine teeth, you must have taken steps to prevent tail-biting through various measures taking into consideration environment and stocking density. Inadequate conditions in the pig facilities or management systems must be corrected. *Statutory order 324, §4, paragraph 4.*



Appendix 11: Hospital pens

On all pig farms, a sufficient number of hospital pens must be available and you must as a minimum always have one hospital pen ready for use. *Statutory order 323, §11a*. The number of hospital pens for sows must always constitute min. 2.5% of the total number of place units for loose gestating sows. This requirement applies to facilities taken into use after January 1, 2011. For all other facilities, the requirement applies as of January 1, 2021. *Statutory order 1449, §1*.

The design of the hospital pen must fulfil the below criteria:

- Soft bed in 2/3 of the minimum area. The soft bed may be constituted by a soft rubber mat or sufficient amounts of straw to prevent direct contact between the animal and the floor. *Statutory order 323, §11a, paragraph 5*.
- All hospital pens must have a heat source and a cooling facility. *Statutory order 323, §11a, paragraph 4*.
- There must be no draught in the pen. *Statutory order 323, §11a, paragraph 4*.
- Hospital pens for sows and gilts can hold up to three animals. *Act 404, §7a*.

Existing space requirements for hospital pens (*Statutory order 323, §11a, paragraph 2*):

Animal	Unobstructed available space in the pen, m ² per animal	
	One animal in the pen	More animals in the pen
Sows and gilts	3,50	2,80
Pigs, 7 - 15 kg	0,41	0,36
Pigs, 15 - 30 kg	0,69	0,58
Pigs, 30 - 60 kg	1,14	0,91
Pigs, 60 - 100 kg	1,70	1,29
Pigs, 100 - 130 kg	2,05	1,53
Pigs, 130 - 150 kg	2,28	1,69

Supervision and frequency

During the daily inspection, assess whether you have enough hospital pens, whether they are intact and are used as intended.

Requirements for documentation

You must record all medical treatments (see Appendix 1), and these records must be kept for minimum five years. *Statutory order 481, §13, paragraph 2*.

Corrective actions and advice

If you experience a lack of hospital place units, establish more place units immediately by:

- Checking if there are healthy animals in the hospital pen that can return to their original pen or be moved to a buffer facility
- Checking if there are sick animals that are not getting better and therefore should be destroyed
- Establishing more hospital pens

Discuss design and optimum use of hospital pens with your pig advisor.



Appendix 12: Handling of aggressive, sick or injured animals

Remove from the pen an aggressive animal injuring other animals and place it in isolation. If this is not possible, cull the animal. *Statutory order 323, §10, paragraph 2.*

Locate the cause of the aggressive behaviour as quickly as possible and adopt appropriate measures, for instance by supplying plenty of straw or other rooting material. *Statutory order 323, §10, §20.*

Move a sick or injured pig/sow/boar to a hospital pen if:

- The pig's wellbeing is jeopardised if it stays in the pen
- The pig needs extra heat (cerebrospinal meningitis, not thriving etc.)
- The pig needs a soft bed (shoulder lesions (degrees 1 & 2), leg problems etc.)
- The pig needs more space and rest (cerebrospinal meningitis, hernia, tail bite, vulva bite etc.)
- The pig needs access to water and feed without having to compete with pen mates (vulva bite, tail bite etc.)
- The pig needs isolation (prolapse)

You must have a clear strategy for handling of sick and injured pigs.

Supervision and frequency

During the daily inspection:

- Be aware of animals showing signs of disease or behaving abnormally
- Examine the individual animals
- Decide whether to move an animal to a hospital pen, isolate and treat it.

Requirements for documentation

All medical treatments must be recorded (see Appendix 1), and these records must be kept for minimum five years. *Statutory order 481, §13, paragraph 2.*

Corrective actions and advice

If an animal is incurable or is severely injured, destroy the animal immediately.

Discuss and plan a strategy for handling sick and injured animals with your herd vet.

Be particularly aware of:



Animals sitting or lying down a lot



Animals that have been in fights



Animals with sore and poor legs



Animals with tail bites or animals that bite



Animals with shoulder lesions



Animals that do not thrive

Appendix 13: Tail biting

Routine tail docking of pigs is illegal. *Statutory order 324, §4.*

If you frequently experience tail biting in your herd, you should initiate tail docking, see Appendix 9.

Ways to prevent tail biting:

- All water valves must provide enough water
- No overstocking and keep mixing of pigs to a minimum
- Routinely adjust the ventilation system (contact a professional)
- Limit noise from ventilation systems and prevent draught (partly open pen sides)
- Permanent access to feed (all day) and a sufficient number of feeding points in systems with ad lib feeding
- All pigs must be able to eat and drink at the same time in systems with restrictive feeding
- Comply with the standards for nutrients
- Supply extra rooting and enrichment material
- Slatted floors matching the age of the animals and floors without burrs, rocks etc.
- No leakage current in pen sides (contact electrician).

For more information, see the manual on tail biting from Pig Research Centre.

Supervision and frequency

During the daily inspection, check for new cases of tail bites, and, if you find any, start treatment.

Requirements for documentation

All medical treatments must be recorded (see Appendix 1), and these records must be kept for minimum five years.

Statutory order 481, §13, paragraph 2.

If tail docking is practised, documentation must be available proving tail biting present in the herd, see Appendix 9. *Statutory order 324, §4, paragraph 2.*

Corrective actions and advice

In case of tail biting, handle the situation according to the below guidelines:

- Supply straw, rope or other material to divert the pigs' attention
- Isolate the pig biting tails
- Isolate/move pigs with small tail bites to a hospital pen and initiate treatment
- Immediately destroy pigs with severe tail bites
- Reduce stocking density
- Locate the causes of the tail biting behaviour (contact your pig advisor)

Tail biting - important check points



Are temperature and air humidity set correctly? Check the control unit of the ventilation system. Remember: desired temperature in the facility + desired air humidity = < 90.



Supply more rooting and enrichment material or supply another type of material during outbreaks of tail biting.



Check the output of the water valves with a watch and a measuring cup.
Output:
Weaners: 0.50-0.8 l/minute
Finishers: 0.8-1.2 l/minute

Appendix 14: Shoulder lesions

All sick or injured animals must immediately receive appropriate care (*Statutory order 707, §5*):

Ways to prevent shoulder lesions:

- Make sure that all sows have an appropriate body condition before they are transferred to the farrowing facility.
- Keep the animals in a good body condition once in the farrowing facility – frequent feedings may help this process.
- Do not use sows older than their 7th parity and sows that have had shoulder lesions/have scars on the humeral region.
- Do not transfer sows with leg problems to the farrowing facility – if necessary, place them in a hospital pen or a relief pen.
- Maintain flooring surfaces and keep them clean (dry floors without burrs).
- Place rubber mats in farrowing pens housing sows at risk of developing shoulder lesions (sows in poor body condition; old sows; sows with a history of shoulder lesions, with leg problems or are of the breed Landrace).
- Make active use of the options available for setting the farrowing rails so that the sow always have as much room as possible for getting up.
- Supply nesting material and rooting and enrichment material – that will stimulate the sow to get up.
- Design new facilities with solid floor under the humeral region of the sows and avoid differences in levels.

For more information, see the manual on shoulder lesions from Pig Research Centre.

Supervision and frequency

During the daily inspection, check for sows with reddening on their scapula or with incipient shoulder lesion.

Routinely check whether an incipient shoulder lesion is improving or deteriorating. Upon reddening of the skin, give the sow a soft bed. Feel how the “lesion” develops – if you see large solid swellings or immovable skin, you probably have a degree 3 or 4 shoulder lesion.

Requirements for documentation

All medical treatments must be recorded (see Appendix 1), and these records must be kept for minimum five years. *Statutory order 481, §13, paragraph 2.*

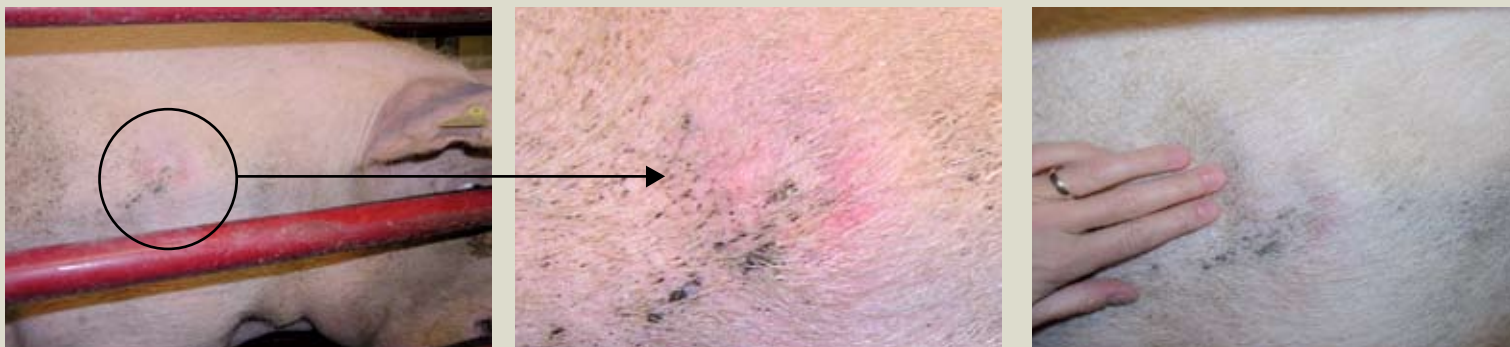
If you have to destroy a sow, make records of dead and destroyed animals. *Statutory order 707, §6.*

Corrective actions and advice

Mark sows with shoulder lesions and initiate treatment. Shoulder lesions must be treated according to the instructions of the herd vet.

If you find an animal with reddening of the skin, provide the animal with a mat to lie on. Sows with degree 3 shoulder lesions must always be housed in a hospital pen. If a degree 3 shoulder lesion deteriorates despite treatment destroy the sow or, if possible, have the sow slaughtered BEFORE the lesion develops to degree 4. Degree 4 is considered neglect and must not be found on animals in the herd.

Photos of degree 1:



Give the sow a soft bed already at incipient reddening of the skin. Feel how the “lesion” develops – have your vet show you how to do this.

Appendix 15: Destruction

Destruction of pigs includes stunning with a captive bolt pistol followed by exsanguination. *Statutory order 583, §53.*

People that destroy animals must make sure that the animal is destroyed as quickly and as painlessly as possible. *Consolidated act 1343, §13.*

Only people with appropriate training should perform destruction of animals. *Statutory orders 583, §3 and 4 + 1343 §13.*

On pig farms that abide by visitation rules with quarantine from visits to another pig farm, the person responsible for the herd must possess a captive bolt pistol and be instructed in the use of this. *Statutory order 583, §15.*

The DANISH inspection requires that a functional captive bolt pistol, suitable cartridges and a sharp knife for exsanguination be available on all pig farms.

A captive bolt pistol must be used for pigs weighing more than 5 kg. *Statutory order 583, §15, paragraph 2.*



Stunning with a captive bolt pistol

If more than one person is involved in the destruction of the animal, you must have agreed upon the division of labour before you start

- Restrain the animal to ensure efficient and correct destruction
- Place the captive bolt pistol correctly on the animal's forehead
- Shoot the animal when it stands completely still
- If you use only one hand to operate the captive bolt pistol, the other hand must not be near the captive bolt.

Destruction by exsanguination

- Cut at least one of the two carotid arteries immediately after shooting the animal
- Use a sharp knife
- Have your vet show you where and how to cut (either lengthwise or across the throat)
- When corneal reflex and breathing or heartbeat have stopped, death has occurred. Ask your vet to show you how you check this.

Stunning of small pigs, finishers and gilts

Selection of captive bolt and cartridge:

- 6 mm Cash Special with 6 mm purple cartridge
- 9 mm Blitz pistol with 9 mm green or yellow cartridge

Correct position:

- Place the captive bolt pistol on the central line of the head, approx. 2-3 cm above the eyes.

Stunning of sows and boars

Selection of captive bolt and cartridge for young sows and boars:

- Blitz pistol with red cartridge
- Cash Magnum with 6 mm red cartridge

Selection of pistol and cartridge for older sows and boars:

- Cash Magnum with 6 mm red cartridge

Correct position:

- Place the captive bolt pistol approx. 5 cm above the eyes and approx. 1-1.5 cm next to the central line.

Supervision and frequency

Routinely check that you have a functional captive bolt pistol, the right cartridges and a sharp knife for exsanguination ready for use. Check that the bolt returns to the starting position after each shot. If not, do not use the pistol until it has been fixed. *Statutory order 583, §44, paragraph 3.*

Requirements for documentation

Record dead (and destroyed) animals during the daily inspection (*Statutory order 707, §6*). Record the number of dead weaners, finishers, gilts, sows and boars individually to obtain information on date and mortality for each group.

Note in the self-audit scheme who is responsible for destruction of animals in the herd, see Appendix 1.

Corrective actions and advice

Ask your vet to show the correct procedure for destroying animals in case of doubt.

Appendix 16: Rooting and enrichment material

All weaners, gilts, finishers and boars must have access to sufficient amounts of appropriate rooting and enrichment materials. *Statutory order 323, §20 + Act 104, §5.*

Interim arrangements applying to sows and gilts (*Act 404, §9*):

Section		Statutory requirement commencing on
Service sections	Taken into use before May 15, 2003	January 1, 2013
(not gestating sows and gilts)	Taken into use after May 15, 2003	May 15, 2003
Gestation sections	Taken into use before January 1, 1999	January 1, 2013
(gestating sows and gilts)	Taken into use after January 1, 1999	January 1, 1999
Farrowing sections	Taken into use before May 15, 2003	January 1, 2013
	Taken into use after May 15, 2003	May 15, 2003

Key words for rooting and enrichment materials:

- The animals must have permanent access to the material. *Statutory order 323, §20; Act 104, §5; Act 404, §9.*
- The material must be manipulable and variable, and must not be harmful. *Consolidated act 1343, §1.*
- It must be possible for the pigs to root and play with the material whenever they like.
- There must enough material for a certain percentage of the pigs to be able to have their need for rooting met at the same time.
- When using rope and wood, you need minimum 2 pieces per 18 weaners, breeding stock or finishers.

Types of material:

We distinguish between materials that fulfil the requirement for enrichment material, rooting material or both at the same time:

	Rooting material	Enrichment material	Supplements required
Straw rack	X	X	
Rope – on pen floor	X	X	
Rope – not on pen floor		X	X
Bedding – on pen floor	X	X	
Straw etc. in blocks – on pen floor	X	X	
Wooden blocks/branches – on pen floor	X	X	
Wooden blocks/branches – not on pen floor		X	X
Deep litter	X	X	
Dry feed in feeder*	X		X
Blocks in dispenser		X	X

**) Implies that the pigs must manipulate the feeder to release feed and that the construction of the feeder allows for only small amounts of feed to be released at a time (the Danish Ministry of Justice instructions on rooting and enrichment material, section 5.2).*

Supervision and frequency

During the daily inspection, check that all pigs have sufficient amounts of appropriate rooting and enrichment material.

Requirements for documentation

None.

Corrective actions and advice

Immediately supply new material if you see that some pigs are lacking rooting and enrichment material.

Appendix 17: Transport and suitability for transport

Own transport

You can transport your own animals in your own vehicle across distances of less than 50 km without being approved as haulier.

(Transport regulation article 1, 2b)

Suitability for transport

Animals must not be transported unless they are fit for the transport in question (Transport regulation article 3, and appendix 1, part 1, subsection 1). Injured animals, animals with disabilities and animals that are sick are not considered fit for transport.

(Transport regulation appendix 1, part 1, subsection 2).

Do not transport animals that

1. Are showing signs of acute disease:

- Fever is not accepted (temperature must be below 39.5°C)
- Normal behaviour, appetite and drinking
- General well-being is unaffected.

2. Have severe, open lesions, or rectal prolapse or vaginal prolapse. *(The Veterinary Health Council, December 2, 2008)*

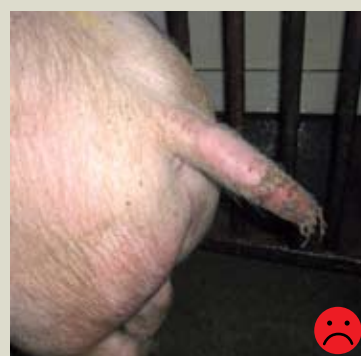
- Tail bites: If the lesion is inflamed or is bleeding, including tendons or bones laid bare.
- Shoulder lesions: Sores are not allowed. Sores must have healed completely.
- Animals with rectal or vaginal prolapses are not fit for transport.



Tail with superficial lesion that only affects the skin.
Assessment: Fit for transport.



A large part of the tail is missing, the lesion is dry and healed.
Assessment: Fit for transport.



Acute tail bite with clear inflammation.
Assessment: Not fit for transport.

3. Have umbilical hernia or inguinal hernia: If the hernia is larger than 15 cm and ulcerations are seen on the hernia, if the pig suffers from restricted movement, its general well-being is affected or there are signs of complications such as incarceration, peritonitis etc. *(The Veterinary Health Council, February 17, 2009)*

• Contingent transport of pigs with hernia

If a hernia is larger than 15 cm and has no sores/lesions, and the animal's overall well-being is unaffected, the pig must be transported separately from other animals and it must be given extra space and bedding. However, it is allowed to transport up to 5 pigs with hernia (umbilical / inguinal) in separate accommodation in the truck with an extra thick layer of bedding and extra space to a nearby slaughterhouse provided that a vet has examined the animals minimum 7 days before the transport and has issued a declaration concerning their suitability for transport. *(The Veterinary Health Council, December 2, 2008)*



Finisher with umbilical hernia. The hernia is smaller than 15 cm, has no lesions and the pig's overall well-being is unaffected.
Assessment: Fit for transport.



Finisher with inguinal hernia. The hernia is larger than 15 cm, has no lesions, and the pig's overall well-being is unaffected.
Assessment: Fit for contingent transport.



Finisher with inguinal hernia. The hernia is larger than 15 cm and has a large lesion.
Assessment: Not fit for transport.

4. Leg and hoof injuries: If the animal does not support evenly on all four legs and its walk is not normal. Torn hooves/lesions resulting from torn dewclaws are not allowed. Hooves must not be deformed.



Buckled forelegs (knuckling) without arthritis or other complications. **Assessment:** Fit for transport.



Dislocation. **Assessment:** Not fit for transport.



Lame support on forelegs. **Assessment:** Not fit for transport.

5. Gestation: Sows and gilts are not fit for transport in the final 11 days of the gestation period and in the first week after farrowing. (Transport regulation appendix 1, part 1, subsection 2, para a)

6. Others: The animal must not have fasted for more than 12 hours prior to arrival at the slaughterhouse.

In case of doubt, ask your vet for help; he can also issue a declaration on suitability for transport. Animals that are fit for contingent transport must never be transported via collection points.

Supervision and frequency

Only move animals that are fit for transport to the pick-up facility. When in doubt, move the animals to a separate pen where the carrier, possibly a vet, will be able to evaluate whether the animal is fit for transport.

Requirements for documentation

None.

Corrective actions and advice

If an animal is not fit for transport, decide whether to start treating the animal, moving it to a hospital pen or to destroy it. When in doubt, ask your vet.

Appendix 18: Outdoor keeping of pigs

Requirements to huts:

- Gestating sows and gilts must have an unbroken lying area of min. 1.3 m² per sow and 0.95 m² per gilt. If boars have access to the huts, there must be a further 2 m² unbroken lying area per boar as a minimum. *Act 173, §3.*
- Farrowing and lactating sows and gilts must have an unbroken lying area of minimum 3.8 m² per sow or gilt. *Act 173, §3, subsection 2.*
- Separate huts for boars must have an unbroken lying area of minimum 3 m² per boar. *Act 173, §3, subsection 3.*
- The height inside the hut must allow for the pigs to stand up and move their head unhindered. *Act 173, §3.*
- Huts must have openings or windows etc. that make it possible to inspect all pigs in the hut. *Act 173, §4, subsection 2.*
- If several sows and gilts are housed in the same enclosure, all pigs must be assured of access to a lying area. *Act 173, §5.*
- Huts must be insulated to ensure that the pigs' temperature requirements are met in all types of weather. *Act 173, §6.*
- The design of the huts must allow for further ventilation besides one doorway so that it is possible to regulate the circulation of air in the huts in cold as well as warm periods. The number, dimensioning and design of the doorways and other openings must protect the pigs as much as possible against the weather. *Act 173, §7.*
- The lying areas in the huts must be covered by straw or other material so that the pigs are dry and warm in all types of weather. In farrowing huts, gestating sows and gilts must be given extra straw or other material with insulating properties and that can be used as nesting material. *Act 173, §8.*

Requirements to activity areas, outdoor areas etc.:

- If based on veterinary arguments, one animal may in exceptional cases be housed in a one-animal accommodation that does not meet the space requirements. *Act 173, §8.* However, the outdoor area of the accommodation must as a minimum be large enough for the animal to be able to lie down stretched laterally, and get up and turn around unhindered.
- All pigs above 20 kg must have access to a mud hole in which they can regulate their body temperature and find shelter from sunburn when average day temperatures exceed 15° in the shade. *Act 173, §10.*
- If the pigs have access to areas with both shade as well as an efficient air flow, the mud hole may be replaced by a sprinkling system or a similar system whereby they can regulate their body temperature. *Act 173, §10, subsection 2.*



- It must be possible to shut off access to a mud hole for lactating sows for up to 14 days post-farrowing if this is based on veterinary arguments. Act 173, §10, subsection 3.

Handling:

- Introduce the animals to the outdoor areas in such a way that they do not suffer any harm in the form of, for instance, sunburn or cold shock.

- Animals kept outdoors must be as protected as possible against predators and infection risks. Statutory order 707, §11.

- You should implement procedures for maintaining constant access to clean drinking water (also during frosty weather), for checking fences and for collecting dead animals.

Supervision and frequency

Inspect all animals regularly (*Consolidated act 1343, §3, subsection 3*).

Requirements for documentation

None.

Corrective actions and advice

If doubt arises as to who does what, make a clear plan of the areas of responsibility.



Technical information and legislation

You can find more detailed technical information on our website www.vsp.lf.dk

At the website of the Danish Veterinary and Food Administration you can find more detailed information, primarily in Danish, under "Obligatorisk sundhedsrådgivning" (obligatory health advice) and "Egenkontrol i svinebesætninger" (self-audit on pig farms). See www.fvst.dk under "dyrevelfærd/veterinærforliget".

Relevant legislation

This self-audit scheme is based on the entire body of Danish legislation on animal welfare:

Acts

- Consolidated act 1343 of December 4, 2007, with subsequent amendments: Dyreværnsloven (Act on the Protection of Animals)
- Act 269 of April 21, 2004: Slagtning og aflivning af højdrægtige produktionsdyr (Slaughter and destruction of farm animals in the late part of gestation)
- Act 173 of March 19, 2001, with subsequent amendments: Udendørs hold af svin (Outdoor keeping of pigs)
- Act 104 of February 14, 2000, with subsequent amendments: Indendørs hold af smågrise, avlssvin og slagtesvin (Indoor keeping of weaners, breeding stock and finishers)
- Act 404 of June 26, 1998, with subsequent amendments: Indendørs hold af drægtige søer og gylte (Indoor keeping of gestating sows and gilts).

Statutory orders

- Statutory order 583 of June 6, 2007: Om slagtning og aflivning af dyr (Slaughter and destruction of animals)
- Statutory order 481 of May 29, 2007, with subsequent amendments: Dyreejeres anvendelse af lægemidler til dyr og fødevarer virksomheders egenkontrol med restkoncentrationer (Animal owners' use of drugs to animals and food companies' self-audit of residue)
- Statutory order 1120 of November 19, 2004: Sygestier (Hospital pens)
- Statutory order 927 of November 21, 2003: Sundhedsrådgivningsaftaler for svinebesætninger (Agreements on health advice for pig farms)
- Statutory order 323 of May 6, 2003, with subsequent amendments: Beskyttelse af svin (Protection of pigs)
- Statutory order 324 of May 6, 2003, with subsequent amendments: Halekupering og kastration af dyr (Tail docking and castration of animals)
- Statutory order 707 of July 18, 2000: Mindstekrav til beskyttelse af landbrugsdyr (Minimum requirements for protection of livestock animals)

Regulations

- Transport regulation no. 1/2005 of December 22, 2004: Beskyttelse af dyr under transport and dermed forbundne aktiviteter mv. (Protection of animals during transport and related activities etc.)

Guideline

- Brief 0625: Guidelines on enrichment and rooting materials.

You can find all relevant legislation at www.retsinfo.dk